

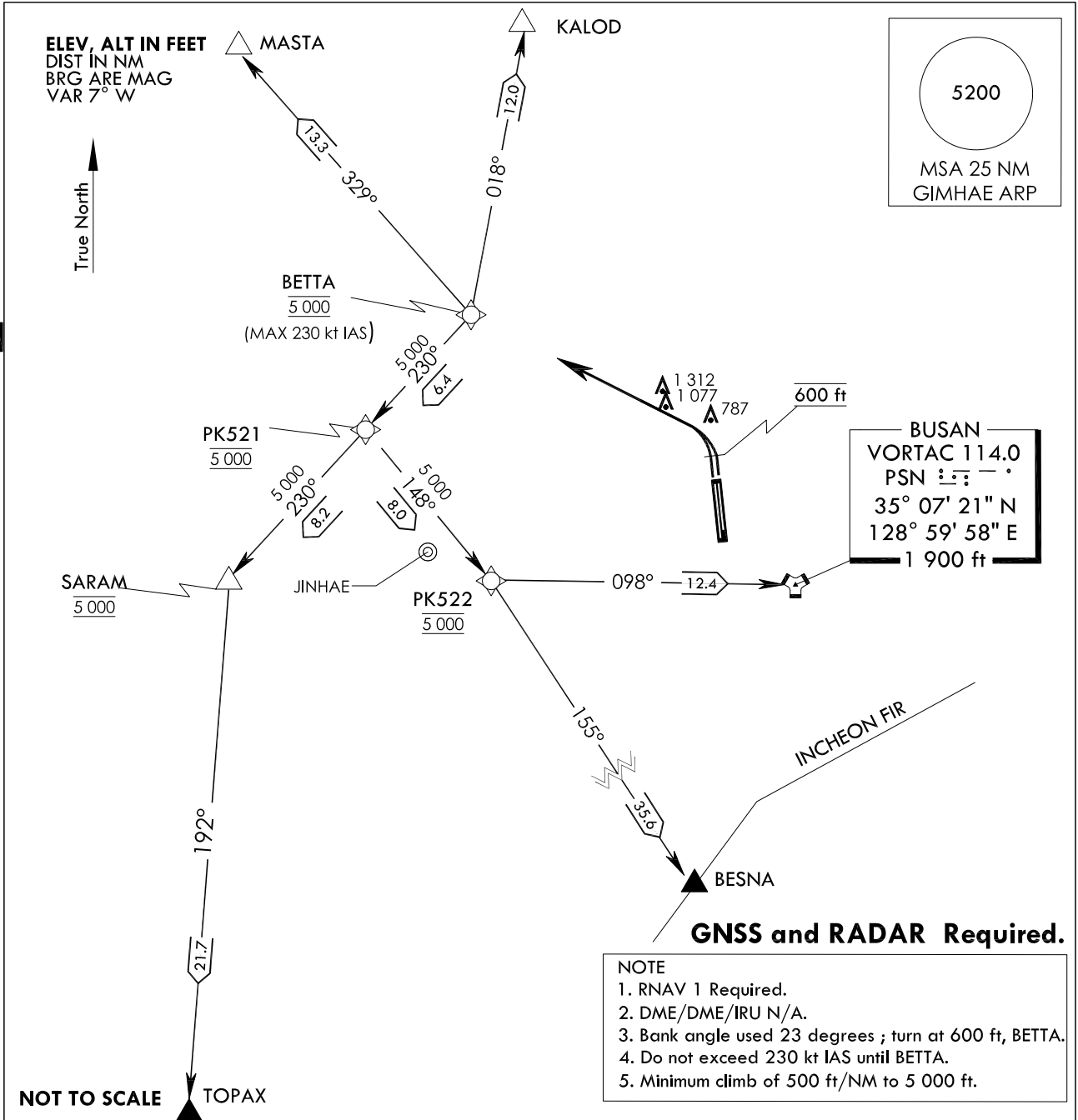
STANDARD DEPARTURE
CHART - INSTRUMENT(SID)

TRANSITION ALT 14 000
TRANSITION LVL FL 140

GIMHAE DEP 125.5
363.8
GIMHAE TWR 118.1
118.450

BUSAN/Gimhae Intl(RKPK)
RWY 36L/R
RNAV(GNSS) BETTA 2

Note : Departure under U.S. TERPS.



DEPARTURE PROCEDURE DESCRIPTION

BETTA 2 DEPARTURE

RWY 36L/R : Climb HDG 001° to 600 ft then direct to cross BETTA at 5 000 ft, thence.....
..... via (TRANSITIONS routes) and climb assigned altitude by ATC.

- KALOD transition** : From BETTA on track 018° to KALDO
- MASTA transition** : From BETTA on track 329° to MASTA
- TOPAX transition** : From BETTA on track 230° to cross PK521 at 5 000 ft, then track 230° to cross SARAM at 5 000 ft, then track 192° to TOPAX.
- BESNA transition** : From BETTA on track 230° to cross PK521 at 5 000 ft, then on track 148° to cross PK522 at 5 000 ft, then on track 155° to BESNA.
- BUSAN (PSN) transition** : From BETTA on track 230° to cross PK521 at 5 000 ft, then track 148° to cross PK522 at 5 000 ft, then track 098° to BUSAN(PSN).

Change : Amended phrases.

**BUSAN/Gimhae INTL(RKPK)
RWY 36L/R
RNAV(GNSS) BETTA 2**

AERONAUTICAL DATA TABULATION

Standard Instrument Departure Procedure Coding Tables

Departure Route - RWY 36R

Serial Number	Path Descriptor	Waypoint Identifier	Fly-over	Course/Track °M(°T)	Distance (NM)	Turn direction	Altitude (ft)	Speed (kt)	Coordinates	VPA/TCH	Navigation specification	Remarks
001	-	RWY 18L	-	-	-	-	-	-	351138.60 N 128561.473 E	-	RNAV 1	DER
002	VA	-	-	001.42(353.95)	-	-	@600	-230	-	-	RNAV 1	CG 500 ft/NM to 5 000 ft
003	DF	BETTA	-	-	-	-	@5 000	-230	351824.2 N 1284346.2 E	-	RNAV 1	-

Departure Route - RWY 36L

Serial Number	Path Descriptor	Waypoint Identifier	Fly-over	Course/Track °M(°T)	Distance (NM)	Turn direction	Altitude (ft)	Speed (kt)	Coordinates	VPA/TCH	Navigation specification	Remarks
001	-	RWY 18R	-	-	-	-	-	-	351137.94 N 1285606.46 E	-	RNAV 1	DER
002	VA	-	-	001.42(353.95)	-	-	@600	-230	-	-	RNAV 1	CG 500 ft/NM to 5 000 ft
003	DF	BETTA	-	-	-	-	@5 000	-230	351824.2 N 1284346.2 E	-	RNAV 1	-

RNAV BETTA 2 - BUSAN(PSN VORTAC) Transition

Serial Number	Path Descriptor	Waypoint Identifier	Fly-over	Course/Track °M(°T)	Distance (NM)	Turn direction	Altitude (ft)	Speed (kt)	Coordinates	VPA/TCH	Navigation specification	Remarks
001	TF	PK521	-	229.87(222.40)	6.36	-	@5 000	-	351342.0 N 1283832.2 E	-	RNAV 1	-
002	TF	PK522	-	147.69(140.22)	8.04	-	@5 000	-	350730.3 N 1284448.6 E	-	RNAV 1	-
003	TF	BUSAN	-	098.07(090.60)	12.44	-	+5 000	-	350721.5 N 1285958.5 E	-	RNAV 1	PSN VORTAC

RNAV BETTA 2 - BESNA Transition

Serial Number	Path Descriptor	Waypoint Identifier	Fly-over	Course/Track °M(°T)	Distance (NM)	Turn direction	Altitude (ft)	Speed (kt)	Coordinates	VPA/TCH	Navigation specification	Remarks
001	TF	PK521	-	229.87(222.40)	6.36	-	@5 000	-	351342.0 N 1283832.2 E	-	RNAV 1	-
002	TF	PK522	-	147.69(140.22)	8.04	-	@5 000	-	350730.3 N 1284448.6 E	-	RNAV 1	-
003	TF	BESNA	-	155.20(147.73)	35.62	-	+5 000	-	343718.0 N 1290751.0 E	-	RNAV 1	-

RNAV BETTA 2 - TOPAX Transition

Serial Number	Path Descriptor	Waypoint Identifier	Fly-over	Course/Track °M(°T)	Distance (NM)	Turn direction	Altitude (ft)	Speed (kt)	Coordinates	VPA/TCH	Navigation specification	Remarks
001	TF	PK521	-	229.87(222.40)	6.36	-	@5 000	-	351342.0 N 1283832.2 E	-	RNAV 1	-
002	TF	SARAM	-	229.82(222.35)	8.23	-	@5 000	-	350736.3 N 1283146.7 E	-	RNAV 1	-
003	TF	TOPAX	-	191.64(184.17)	21.71	-	+5 000	-	344555.3 N 1282951.7 E	-	RNAV 1	-

RNAV BETTA 2 - MASTA Transition

Serial Number	Path Descriptor	Waypoint Identifier	Fly-over	Course/Track °M(°T)	Distance (NM)	Turn direction	Altitude (ft)	Speed (kt)	Coordinates	VPA/TCH	Navigation specification	Remarks
001	TF	MASTA	-	328.96(321.49)	13.25	-	+5 000	-	352847.0 N 1283340.0 E	-	RNAV 1	-

RNAV BETTA 2 - KALOD Transition

Serial Number	Path Descriptor	Waypoint Identifier	Fly-over	Course/Track °M(°T)	Distance (NM)	Turn direction	Altitude (ft)	Speed (kt)	Coordinates	VPA/TCH	Navigation specification	Remarks
001	TF	KALOD	-	017.96(010.49)	11.98	-	+5 000	-	353012.1 N 1284626.5 E	-	RNAV 1	-

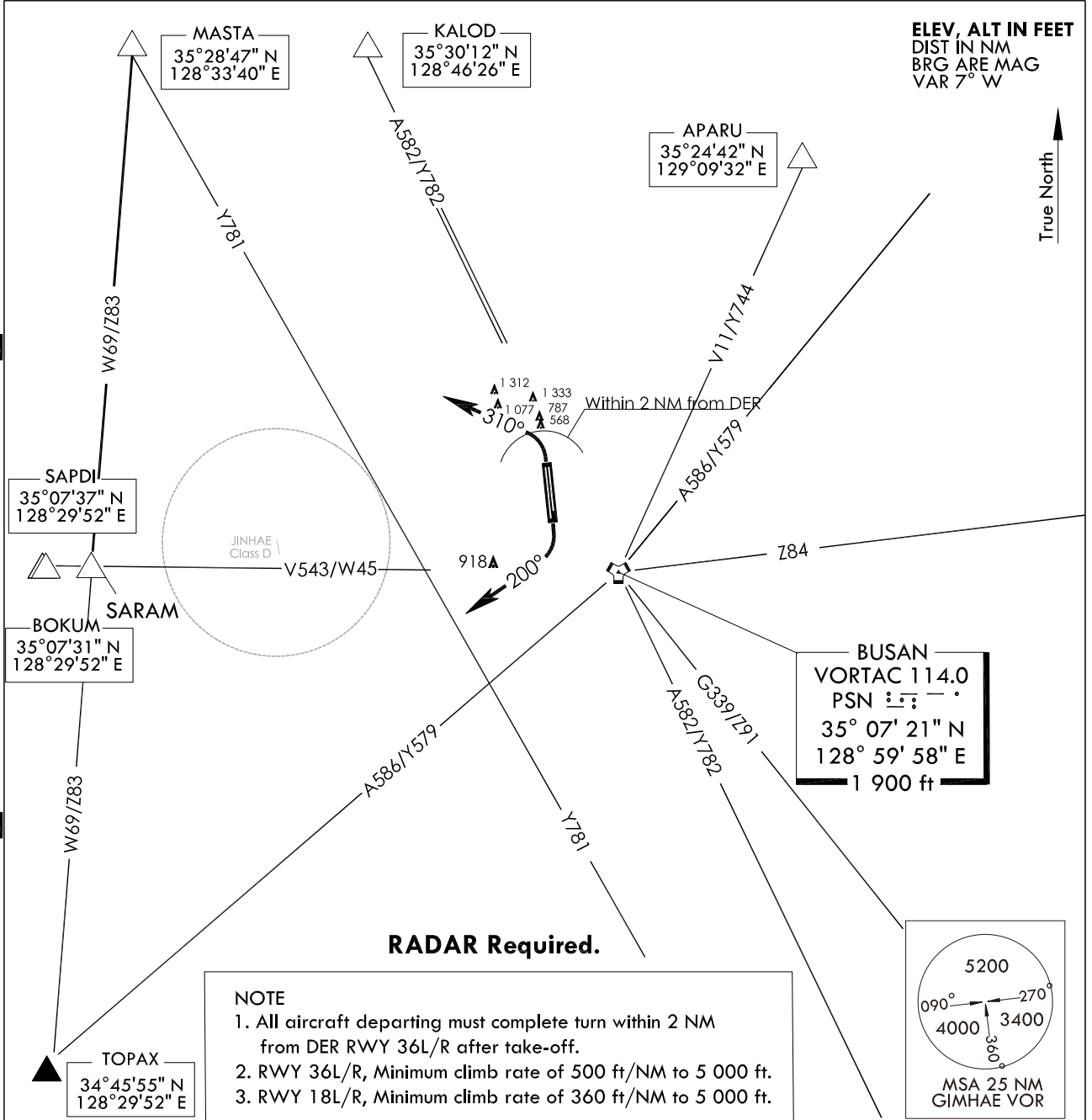
**STANDARD DEPARTURE
CHART - INSTRUMENT(SID)**

TRANSITION ALT 14 000
TRANSITION LVL FL 140

GIMHAE DEP	125.5
	363.8
GIMHAE TWR	118.1
	118.450

BUSAN/Gimhae Intl(RKPK)
RWY 36L/R
RWY 18L/R
GIMHAE 2

Note : Departure under U.S. TERPS.



DEPARTURE ROUTE DESCRIPTION

GIMHAE 2 DEPARTURE

RWY 36L/R : Climb left turn HDG 310°, Thence.....

RWY 18L/R : Climb right turn HDG 200°, Thence.....

.....Expect radar vectors to intercept filed Enroute fix or Navaid.

Maintain 5 000 ft or assigned altitude (flight level).

Expect filed altitude/flight level 10 minutes after departure.

LOST COMMUNICATIONS :

If radio contact is not established with departure control prior to reaching 5 000 ft, Continue climb to 8 000 ft before turning to filed fix/Navaid and proceed filed route and altitude.

Change : Information of route designator(W66→W69).

INTENTIONALLY

LEFT

BLANK

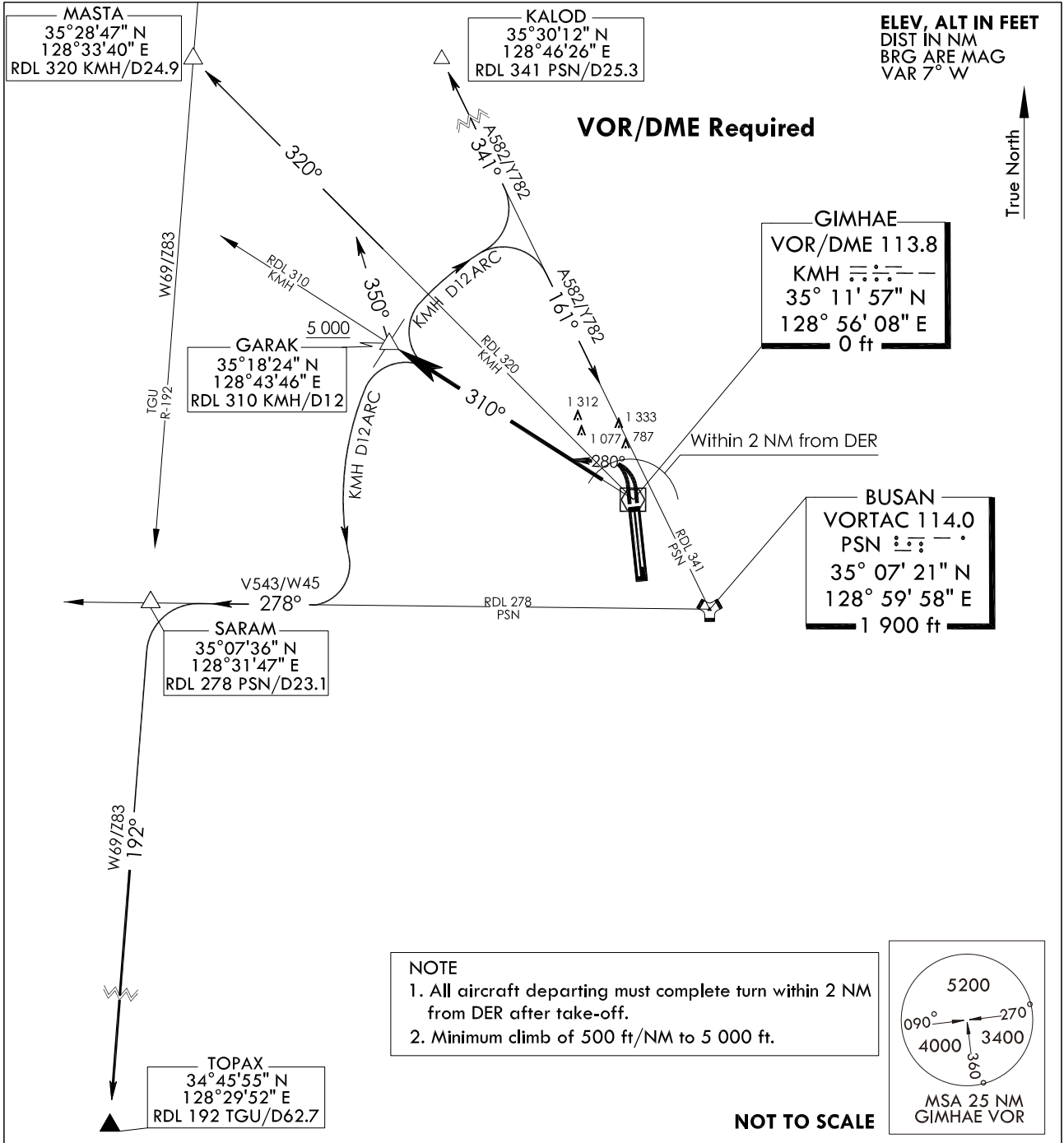
**STANDARD DEPARTURE
CHART - INSTRUMENT(SID)**

TRANSITION ALT 14 000
TRANSITION LVL FL 140

GIMHAE DEP	125.5
	363.8
GIMHAE TWR	118.1
	118.450

BUSAN/Gimhae Intl(RKPK)
RWY 36L/R
GARAK 3

Note : Departure under U.S. TERPS.



DEPARTURE ROUTE DESCRIPTION

GARAK 3 DEPARTURE

RUNWAY 36L/R : Climbing left turn HDG 280° to intercept RDL 310 KM/D and RDL 310 KM/D to cross GARAK at or above 5 000 ft. thence.....
.....via (TRANSITIONS), climb assigned altitude or as directed by ATC.

KALOD Transition : Right turn and proceed via KM/D 12 DME arc to RDL 341 PSN, then via RDL 341 PSN to KALOD.

BUSAN(PSN) Transition : Right turn and proceed via KM/D 12 DME arc to RDL 341 PSN, then via RDL 341 PSN to PSN.

MASTA Transition : Right turn HDG 350° to RDL 320 KM/D , then via RDL 320 KM/D to MASTA.

TOPAX Transition : Left turn and proceed via KM/D 12 DME arc to RDL 278 PSN, then via RDL 278 PSN to SARAM, then left turn via RDL 192 TGU to TOPAX.

Change : Information of route designator and amended phrases.

INTENTIONALLY

LEFT

BLANK

**STANDARD DEPARTURE
CHART - INSTRUMENT(SID)**

TRANSITION ALT 14 000
TRANSITION LVL FL 140

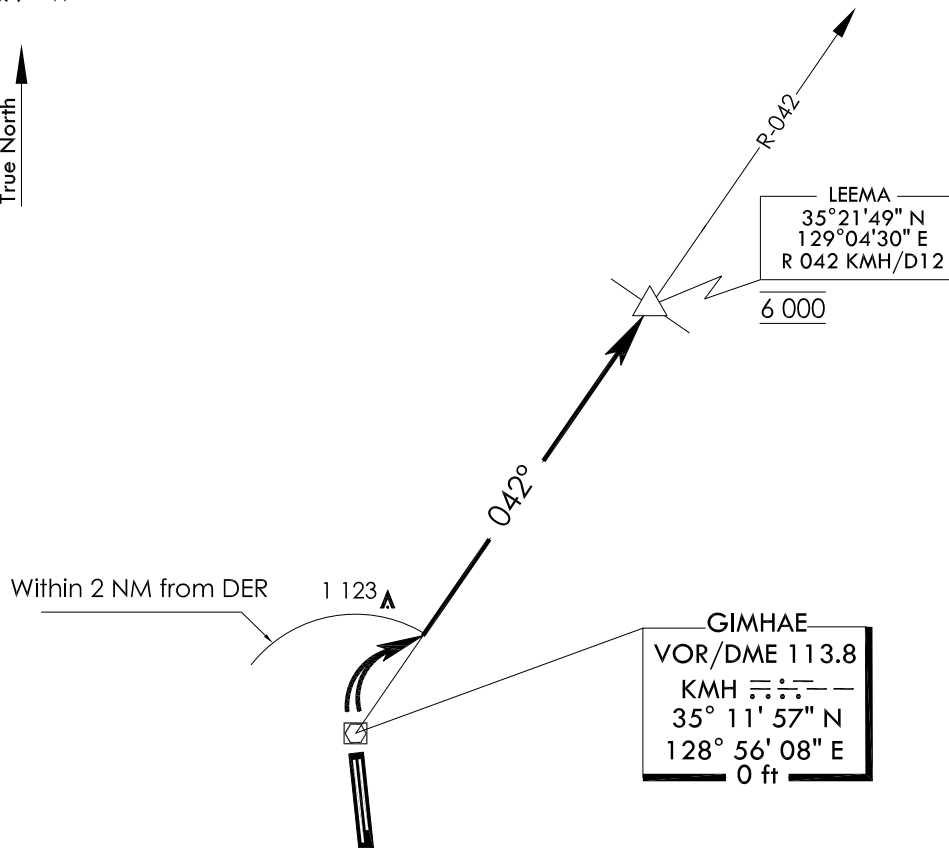
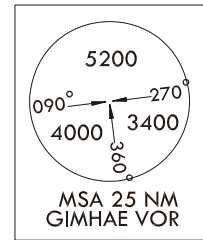
GIMHAE DEP 125.5
363.8
GIMHAE TWR 118.1
118.450

**BUSAN/Gimhae Intl(RKPK)
RWY 36L/R
LEEMA 2**

Note : Departure under U.S. TERPS.

ELEV, ALT IN FEET
DIST IN NM
BRG ARE MAG
VAR 7° W

VOR/DME and RADAR Required.



NOTE

1. All aircraft departing must complete turn within 2 NM from DER after take-off.
2. Do not exceed 240 kt IAS below 6 000 ft.
3. Minimum climb of 500 ft/NM to 6 000 ft.

NOT TO SCALE

DEPARTURE PROCEDURE DESCRIPTION

LEEMA 2 DEPARTURE

RUNWAY 36L/R : Climbing right turn to intercept KMH VOR/DME R-042 and climb to 6 000 ft on KMH R-042 to LEEMA, then expect RADAR vector to assigned route and fix.

Change : New procedure.

INTENTIONALLY

LEFT

BLANK

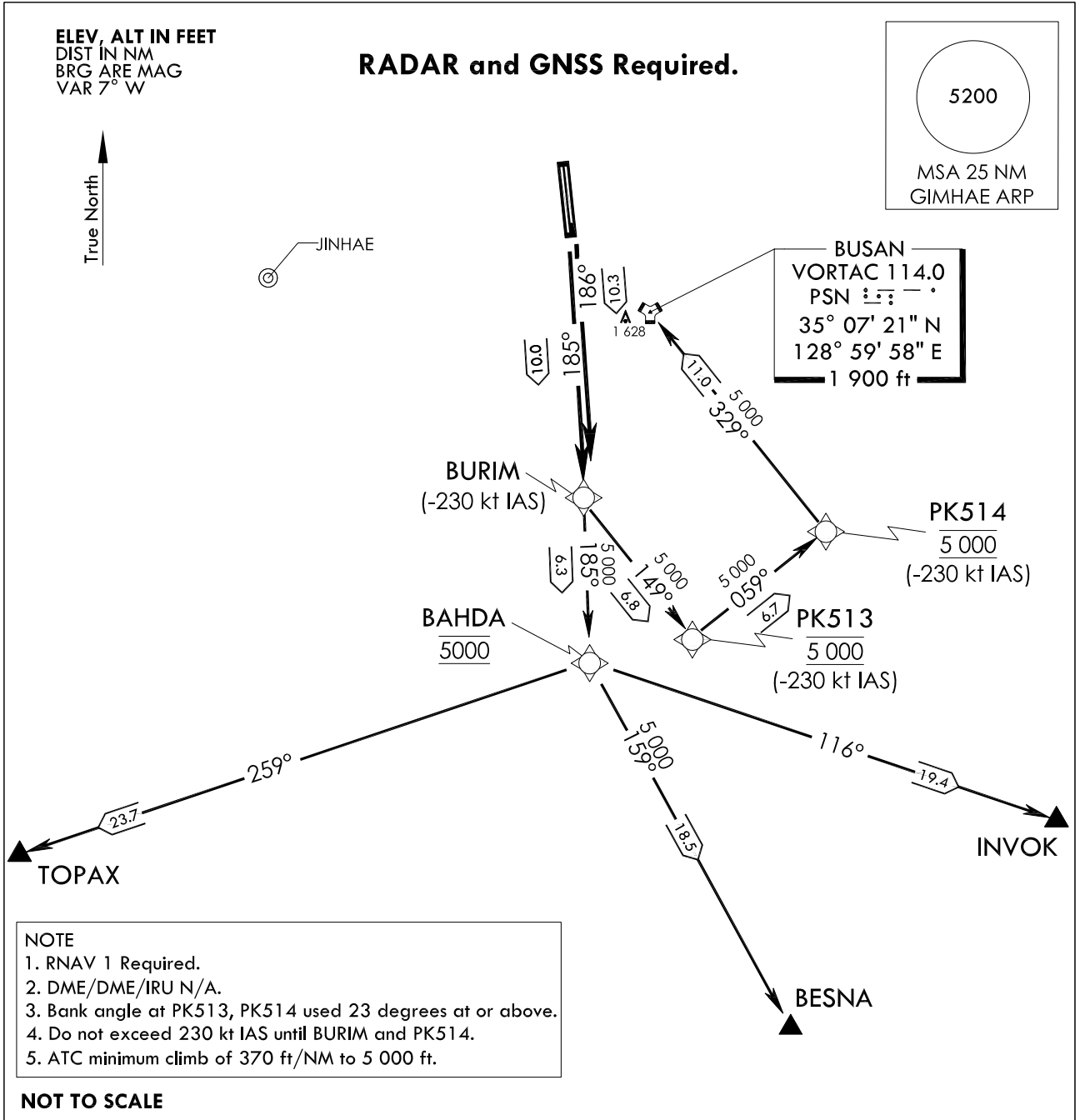
**STANDARD DEPARTURE
CHART - INSTRUMENT(SID)**

TRANSITION ALT 14 000
TRANSITION LVL FL 140

GIMHAE DEP 125.5
363.8
GIMHAE TWR 118.1
118.450

**BUSAN/Gimhae Intl(RKPK)
RWY 18L/R
RNAV(GNSS) BURIM 2**

Note : Departure under U.S. TERPS.



DEPARTURE ROUTE DESCRIPTION

BURIM 2 DEPARTURE

RUNWAY 18R : Climb on course 185° to BURIM, thence.....

RUNWAY 18L : Climb on course 186° to BURIM, thence.....

..... via (TRANSITIONS routes) and climb assigned altitude by ATC.

TOPAX transition : From BURIM on track 185° to cross BAHDA at 5 000 ft, then track 259° to TOPAX.

BESNA transition : From BURIM on track 185° to cross BAHDA at 5 000 ft, then track 159° to BESNA.

INVOK transition : From BURIM on track 185° to cross BAHDA at 5 000 ft, then track 116° to INVOK.

BUSAN (PSN) transition : From BURIM on track 149° to cross PK513 at 5 000 ft,
then track 059° to cross PK514 at 5 000 ft,
then track 329° to cross BUSAN(PSN) at or above 5 000 ft.

BUSAN/Gimhae INTL(RKPK)
RWY 18L/R
RNAV(GNSS) BURIM 2

AERONAUTICAL DATA TABULATION

Standard Instrument Departure Procedure Coding Tables

Departure Route - RWY 18L

Serial Number	Path Descriptor	Waypoint Identifier	Fly-over	Course/Track °M(°T)	Distance (NM)	Turn direction	Altitude (ft)	Speed (kt)	Coordinates	VPA/TCH	Navigation specification	Remarks
001	-	RWY 36R	-	-	-	-	-	-	351010.10 N 1285626.14 E	-	RNAV 1	DER
002	CF	BURIM	-	185.79(178.33)	10.29	-	-	-230	345952.3 N 1285648.1 E	-	RNAV 1	CG 370 ft/NM to 5 000 ft

Departure Route - RWY 18R

Serial Number	Path Descriptor	Waypoint Identifier	Fly-over	Course/Track °M(°T)	Distance (NM)	Turn direction	Altitude (ft)	Speed (kt)	Coordinates	VPA/TCH	Navigation specification	Remarks
001	-	RWY 36L	-	-	-	-	-	-	350954.69 N 1285619.79 E	-	RNAV 1	DER
002	CF	BURIM	-	185.25(177.79)	10.03	-	-	-230	345952.3 N 1285648.1 E	-	RNAV 1	CG 370 ft/NM to 5 000 ft

RNAV BURIM 2 - TOPAX Transition

Serial Number	Path Descriptor	Waypoint Identifier	Fly-over	Course/Track °M(°T)	Distance (NM)	Turn direction	Altitude (ft)	Speed (kt)	Coordinates	VPA/TCH	Navigation specification	Remarks
001	TF	BAHDA	-	185.24(177.77)	6.27	-	@5 000	-	345334.4 N 1285705.8 E	-	RNAV 1	CG 370 ft/NM to 5 000 ft
002	TF	TOPAX	-	258.78(251.31)	23.69	-	+5 000	-	344555.3 N 1282951.7 E	-	RNAV 1	-

RNAV BURIM 2 - BESNA Transition

Serial Number	Path Descriptor	Waypoint Identifier	Fly-over	Course/Track °M(°T)	Distance (NM)	Turn direction	Altitude (ft)	Speed (kt)	Coordinates	VPA/TCH	Navigation specification	Remarks
001	TF	BAHDA	-	185.24(177.77)	6.27	-	@5 000	-	345334.4 N 1285705.8 E	-	RNAV 1	CG 370 ft/NM to 5 000 ft
002	TF	BESNA	-	158.81(151.34)	18.51	-	+5 000	-	343718.0 N 1290751.0 E	-	RNAV 1	-

RNAV BURIM 2 - INVOK Transition

Serial Number	Path Descriptor	Waypoint Identifier	Fly-over	Course/Track °M(°T)	Distance (NM)	Turn direction	Altitude (ft)	Speed (kt)	Coordinates	VPA/TCH	Navigation specification	Remarks
001	TF	BAHDA	-	185.24(177.77)	6.27	-	@5 000	-	345334.4 N 1285705.8 E	-	RNAV 1	CG 370 ft/NM to 5 000 ft
002	TF	INVOK	-	116.21(108.75)	19.38	-	+5 000	-	344719.0 N 1291923.0 E	-	RNAV 1	-

RNAV BURIM 2 - PSN(VORTAC) Transition

Serial Number	Path Descriptor	Waypoint Identifier	Fly-over	Course/Track °M(°T)	Distance (NM)	Turn direction	Altitude (ft)	Speed (kt)	Coordinates	VPA/TCH	Navigation specification	Remarks
001	TF	PK513	-	148.71(141.24)	6.83	-	@5 000	-230	345432.3 N 1290159.8 E	-	RNAV 1	CG 370 ft/NM to 5 000 ft
002	TF	PK514	-	058.76(051.29)	6.71	-	@5 000	-230	345844.3 N 1290822.2 E	-	RNAV 1	-
003	TF	PSN	-	328.82(321.35)	11.03	-	+5 000	-	350721.5 N 1285958.5 E	-	RNAV 1	VORTAC

Change : Information of Coordinates.

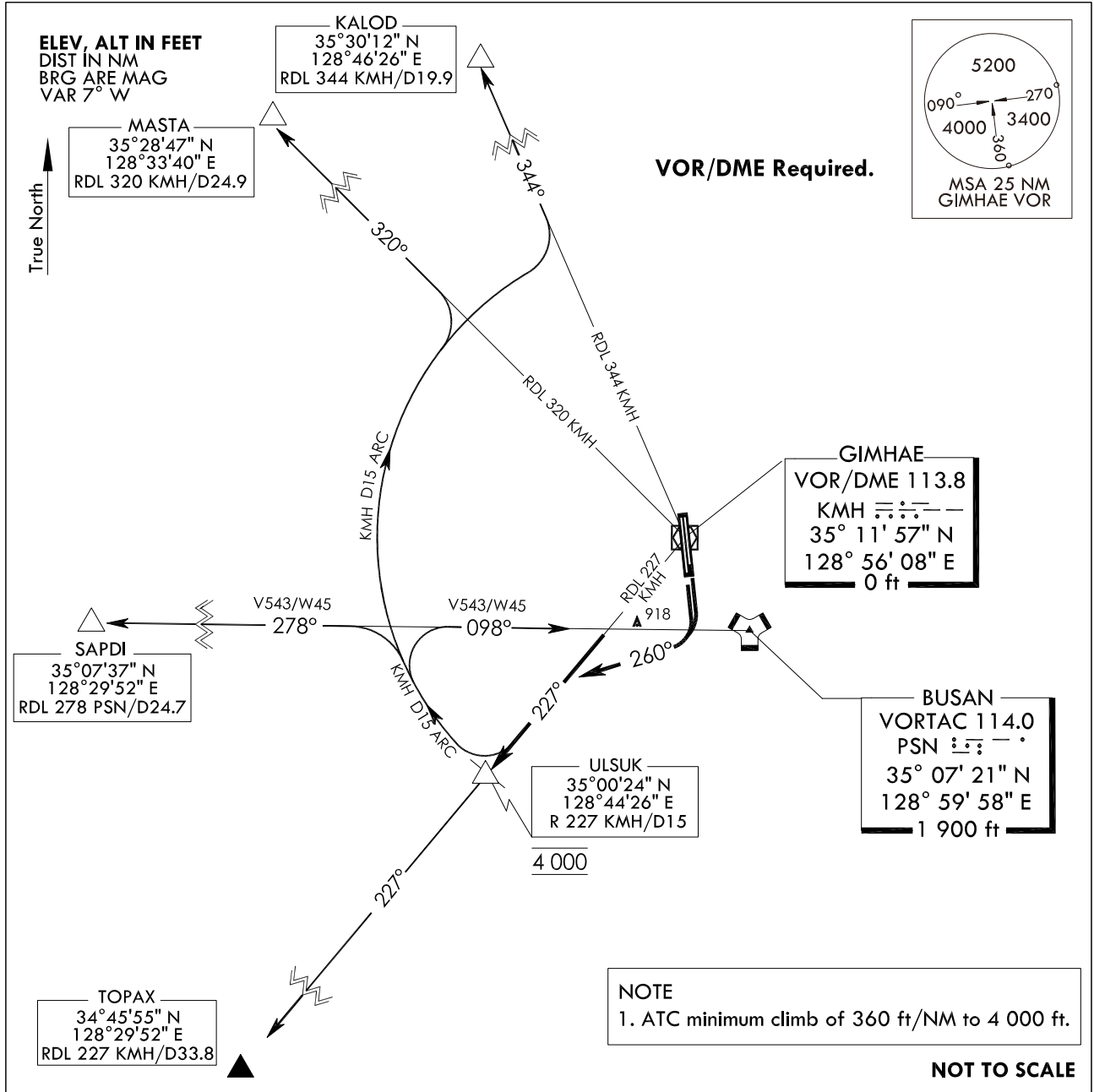
**STANDARD DEPARTURE
CHART - INSTRUMENT(SID)**

TRANSITION ALT 14 000
TRANSITION LVL FL 140

GIMHAE DEP 125.5
363.8
GIMHAE TWR 118.1
118.450

BUSAN/Gimhae Intl(RKPK)
RWY 18L/R
ULSUK 3

Note : Departure under U.S. TERPS.



DEPARTURE PROCEDURE DESCRIPTION

ULSUK 3 DEPARTURE

RUNWAY 18L/R : Climbing right turn HDG 260° to intercept RDL 227 KM/H and climbing 4 000 ft on RDL 227 KM/H to ULSUK, thence.....
.....via (TRANSITION), climb assigned altitude or as directed by ATC.

KALOD transition : Right turn and proceed via KM/H 15DME arc to RDL 344 KM/H, then via RDL 344 KM/H to KALOD.

MASTA transition : Right turn and proceed via KM/H 15DME arc to RDL 320 KM/H, then via RDL 320 KM/H to MASTA.

SAPDI transition : Right turn and proceed via KM/H 15DME arc to RDL 278 PSN, then via RDL 278 PSN to SAPDI.

BUSAN (PSN) transition : Right turn and proceed via KM/H 15DME arc to RDL 278 PSN, then via RDL 278 PSN to BUSAN (PSN).

TOPAX transition : RDL 227 KM/H to TOPAX.

Change : Information of procedures.

INTENTIONALLY

LEFT

BLANK

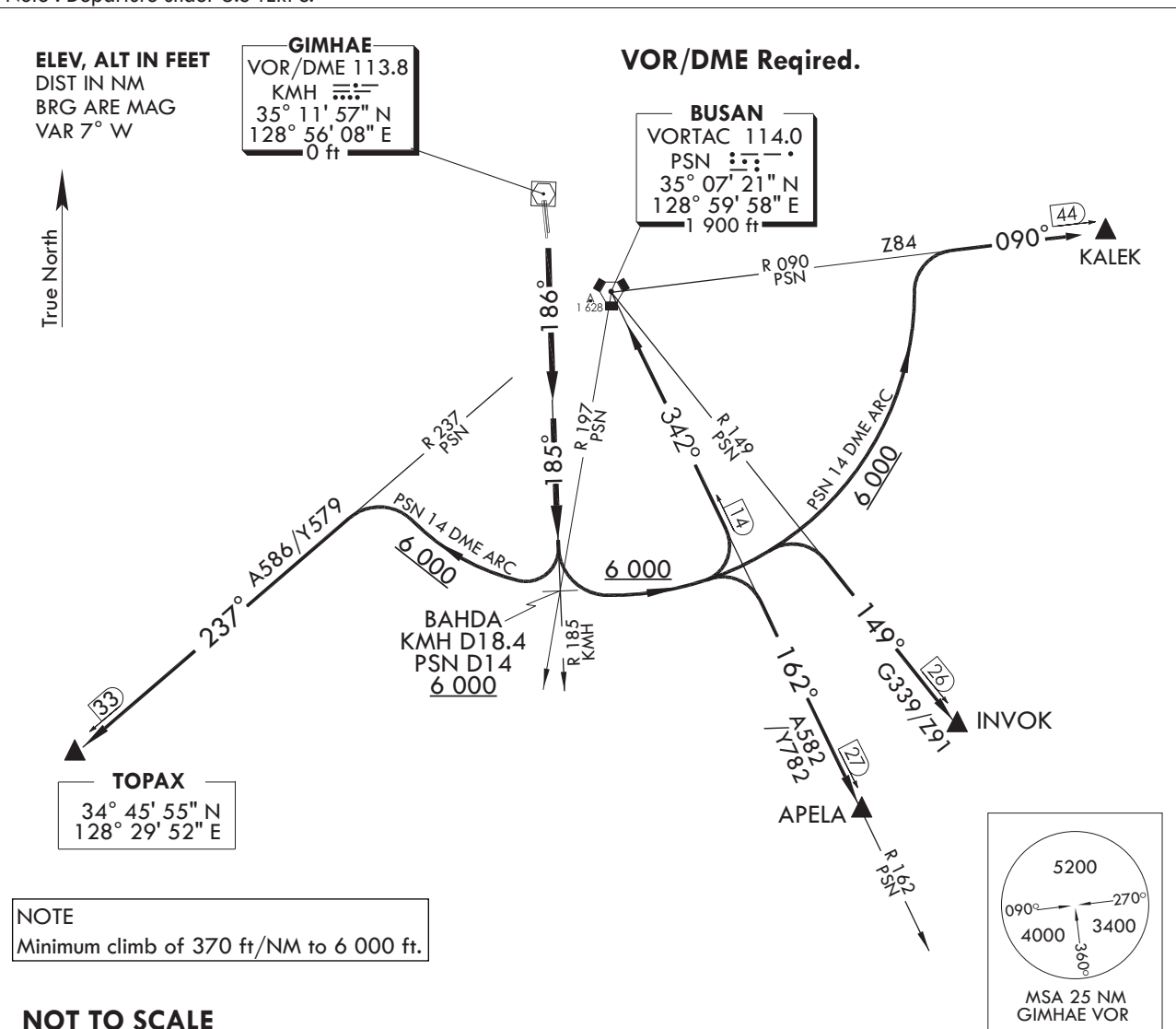
STANDARD DEPARTURE CHART
INSTRUMENT (SID)

TRANSITION ALT 14 000
TRANSITION LVL FL 140

GIMHAE DEP 125.5 363.8
GIMHAE TWR 118.1 233.3
118.450 236.6

BUSAN/Gimhae INTL(RKPK)
RWY 18L/R
BAHDA 1

Note : Departure under U.S TERPS.



NOTE
Minimum climb of 370 ft/NM to 6 000 ft.

NOT TO SCALE

DEPARTURE ROUTE DESCRIPTION

BAHDA 1 DEPARTURE

RUNWAY 18L/R : Climb 6 000 ft via heading 186° to intercept R 185 KMH to cross BAHDA at or above 6 000 ft, then via(TRANSITION routes) and climb assigned altitude by ATC.

KALEK transition : Left turn and proceed via the PSN D14 ARC to intercept R 090 PSN then R 090 PSN to KALEK.

INVOK transition : Left turn and proceed via the PSN D14 ARC to intercept R 149 PSN then R 149 PSN to INVOK.

APELA transition : Left turn and proceed via the PSN D14 ARC to intercept R 162 PSN then R 162 PSN to APELA.

BUSAN(VORTAC) transition : Left turn and proceed via the PSN D14 ARC to intercept R 162 PSN then R 162 PSN to BUSAN VORTAC(PSN).

TOPAX transition : Right turn and proceed via the PSN D14 ARC to intercept R 237 PSN then R 237 PSN to TOPAX.

Change : Establishment of phrases(VOR/DME Required).

INTENTIONALLY

LEFT

BLANK